

THE TROY BURNS FAMILY LOGO CONSISTS OF TWO PRIMARY ELEMENTS:
THE BRAND MARK WITH THE SWOOSH AND THE LOGO TYPE.

PLEASE DO NOT MODIFY EITHER OF THESE ELEMENTS.



FONTS:

TBF Letters & Name: Perpetua Titling MT

Scripture: Book Antiqua Italics

NOTE: Please do not change the scripture
verse or version used.

SWOOSH: must be used as part of the
logo.

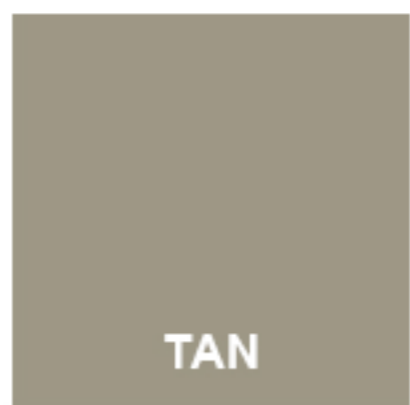
BRAND COLORS:

PRIMARY:



RED

#8e1a1e
27-99-98-29



TAN

#9d9785
40-35-48-3



GREY

#d0cfcf
18-14-17-0

SECONDARY:



BLUE

#35455d
83-70-42-30